

# DISTINCTIVE POWDER ROOMS WELCOME GUESTS

**T**hese powder rooms may seem different upon first glance, but the principle is the same for both: Create a special and inviting experience for your guests.

Both baths use unique finishes, making them functional and fabulous.

## Dramatic room envelops guests

Dark paint makes the walls recede and pulls the eye to the fabulous counter, marble sink and sparkling tile. The base cabinet is painted to match the dark walls, emphasizing the floating vanity. The clear-glass lights refract light off the broken mirror mosaic, adding more sparkle. Even the dark hand towel blends into the walls. The mirror is long enough to allow guests to check clothing.

The extra thick counter, a 6-inch deep CaesarStone quartz by Carthage Marble, creates a white backdrop for the deep marble bowl, carved from one piece of stone.

A can light above makes the sink and faucet sparkle but makes dark shadows on the faces of guests, so placing sconces to either side of the mirror washes the guest with light, creating a flattering glow.

A way to do this in your bathroom is to add a dimmer



switch for the lights, dim the lights low and light a candle for instant atmosphere.

## Pool bath reflects the water

In the pool bath (created in conjunction with Driftworks Design of Kansas City), the countertop looks like water bubbles, made of glass oval mosaics in a medley of blues. Stainless steel trim finishes the tile edge with a crisp line. The sink, mirror frame, soap dish and towel are all white, so they don't upstage the beautiful tile.

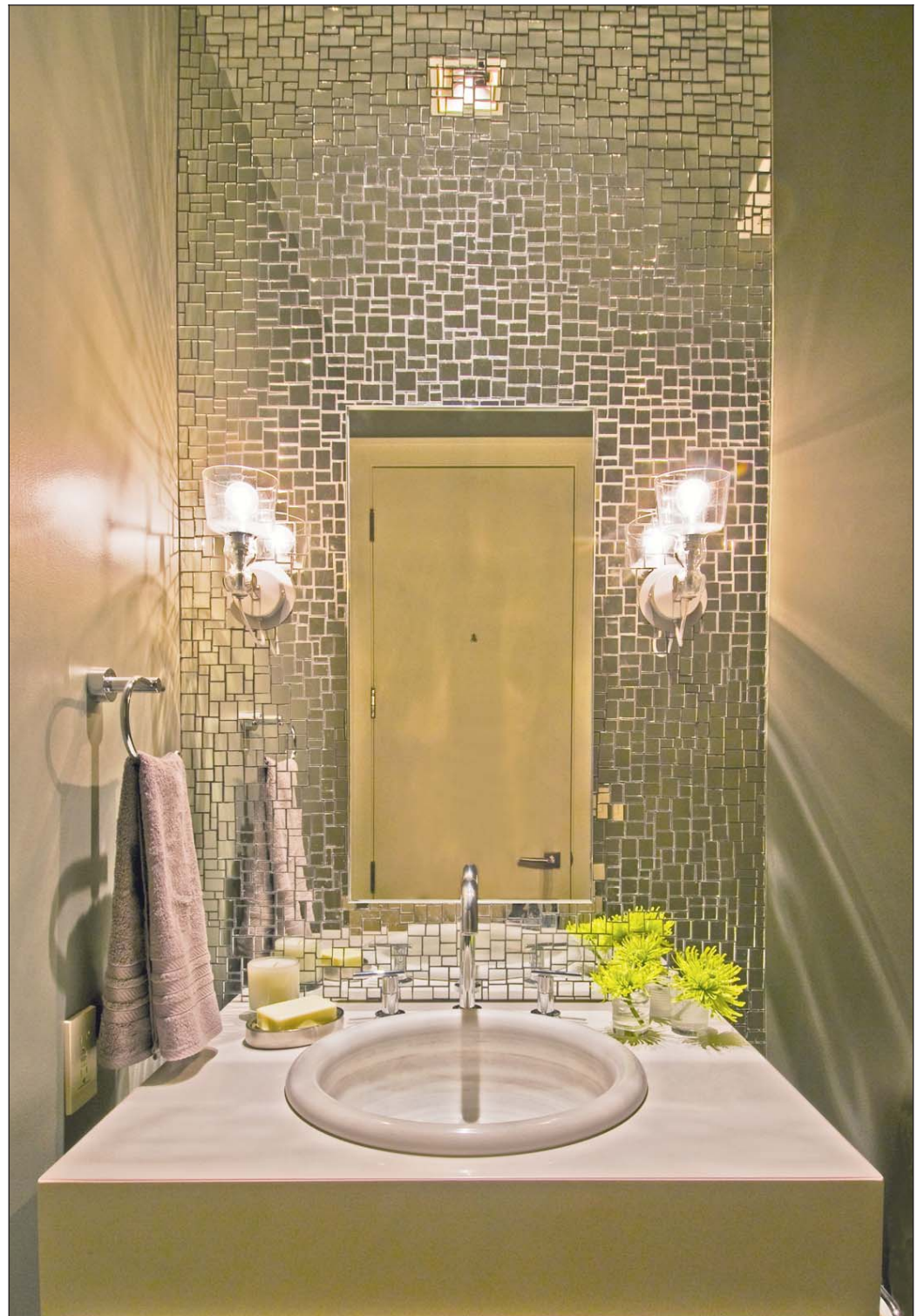
Provisions for an afternoon at the pool are stored in cabinets. Sunblock, pool towels and other pool supplies are ready for guests.

## Minor changes are welcoming

Dramatic tile, flattering lighting, beautiful sinks and unique color make these bathrooms a wonderful experience, but you don't need to make major changes to your bath.

Adding a scented candle and a pretty box of matches, a fresh bar of scented soap, a nice hand towel and a vase with a single flower can make your guests feel special.

Reach Lisa Schmitz, owner of Lisa Schmitz Interior Design in Kansas City, at [lisaschmitz@kc.rr.com](mailto:lisaschmitz@kc.rr.com).



PHOTOS BY ROY INMAN | SPECIAL TO THE STAR

Mosaic tile and a dark wall color combine to create a dramatic powder room. The mirror is from Westport Glass of Kansas City, Kan.

Frosted glass mosaics mimic water bubbles and create a calming spa-like space.

