

SPACES **KANSAS CITY** ARTS

**THE
FASHION
ISSUE!**

FASHIONABLY
CHIC WARD
PARKWAY TUDOR

MISSION HILLS
DREAM HOME

FALL'S
BEST
LOOKS

SEPTEMBER 2013 \$3.95



www.spaceskc.com

PLUS

DESTINATION BORDEAUX
RUNWAY LOOKS IN HOME DECOR
ICONIC K.C. ARCHITECTURE
AND SO MUCH MORE!



WARM AND WONDERFUL

A KANSAS CITY ARCHITECT DESIGNS A MISSION HILLS DREAM HOME FOR HIS FAMILY

If you've ever admired a large bank of windows or an oversize door in a commercial building and thought *I'd love that for my house*, read on.

Brad Schrock is an architect with 360 Architects, a firm specializing in big commercial projects like Spin! Pizza, the K-State Olathe Innovation Campus, and Cisco Field, home of the Oakland A's, in California. When he and his wife, Mary, outgrew the Leawood home they



Opposite, top: A large wall of windows is a hallmark of the front door of Brad and Mary Schrock's Mission Hills home. Opposite, below: Douglas fir double doors open onto the porch. This page: A wide set of French doors flanked by side-lights lead to the backyard. Flowers by Studio Dan Meyers in the Crossroads.

BY CONTRIBUTING WRITER JUDITH FERTIG
PHOTOGRAPHED BY AARON LEIMKUEHLER



Opposite: In the living room, the beamed ceiling matches the wood used for the fireplace wall and the built-in console. Above: Broad steps lead from the dining room French doors to the outdoor living space. Left: The open staircase leads to the second floor and the sons' rooms, guest room and balcony over the kitchen.

shared with their two sons, a corner lot in Mission Hills beckoned.

"It all came together quickly," says Mary. And all of a sudden, she and Brad had a new project—building a new family home.

Designing the house was "probably the most difficult thing I have done as an architect," says Brad. "I think designing your own home really exposes who you are as an architect, what you believe in, with no influence and no guidance from a client. You are the client. I am thankful that I have a great wife who has very similar tastes and was someone I could continually bounce ideas off of and work together with."

"Warm contemporary" is how Mary



An orchid arrangement from Studio Dan Meiners is centered on the dining room table.



Left: Concrete and stainless steel surfaces are warmed by the custom-made Douglas fir cabinetry in the kitchen. Above: Two Eames chairs front the kitchen fireplace.

describes the feel they wanted. "We were both influenced by Seattle and the Pacific Northwest. We love the honey color of Douglas fir and mixing materials like steel, concrete and plaster with warm natural wood and stone."

To make the best use of natural light, Brad designed a T-shaped house with the bedrooms, closets, and storage on the top of the T, situated on the north side of the property. The stem of the T, where the kitchen, dining room and living room are located, gets light from three sides for the indoor/outdoor feel they wanted.



Opposite: French doors at the foot of the bed in the master bedroom lead directly to the courtyard. Left: The master bathroom is a wealth of detail: the inset beams, the creatively patterned tile, the built-in bench in the shower.

And to get the house to perform as they wanted—lots of windows but soundproof, sturdy and solid yet refined—they often turned to commercial products and fabricators such as Loewen Windows, Carter Glass, and Umicore/VM Zinc. “The aluminum storefront windows in the entry and dining have worked very well and allow large amounts of insulated glass,” says Brad. “The natural zinc roof is more common in Europe on residential projects.”

Early on, the couple enlisted the help of Lisa Schmitz, an interior designer who has worked with 360 Architects. “One of the keys to achieving a warm, modern style is to mix textures,” she says, “such as sleek stainless steel with poured concrete, end-grain wood with smooth porcelain, exposed wood beams with painted walls.” Known for her timeless modern style with practical livability, Schmitz helped the couple with the finishes, sense of scale, and furniture that

would fit their aesthetic.

The balance of openness versus privacy strikes the first note as you enter the home. Floating from thin cables, a Lucite panel embedded with a decorative design prevents you from seeing the rest of the house but lets light flood through. The two paintings hanging in the foyer came from Mary’s great uncle.

In the living room, an asymmetrical fireplace wall makes great use of pre-cast concrete. SEE WARM & WONDERFUL ON PAGE 152.

Mark your wedding planners for our winter show

KCweddings®
Bridal spectacular

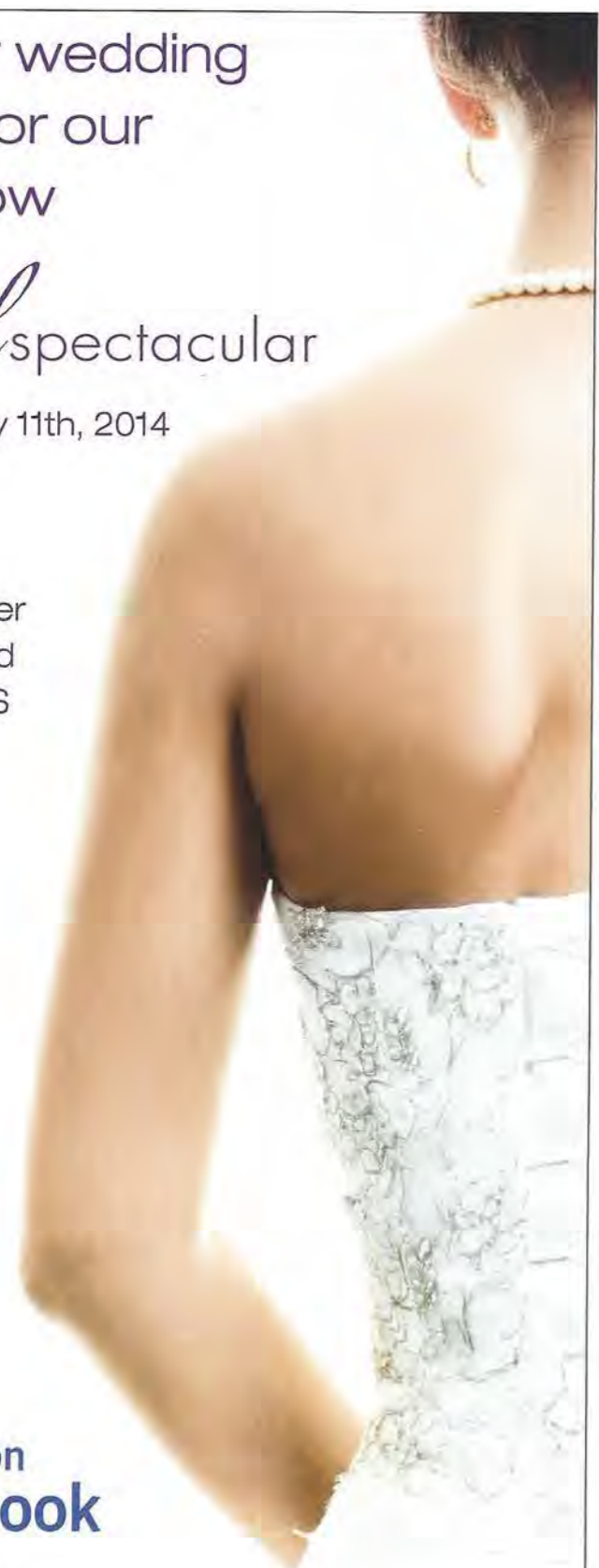
Saturday, January 11th, 2014
10am-5pm

Overland Park
Convention Center
6000 College Blvd
Overland Park, KS

 Find us on
Facebook

Be sure to visit
KCWEDDINGS.COM
for more information and
to register for your free Bridal Kit.

Produced by KC Weddings Magazine & The Kansas City Star



Warm & Wonderful

CONTINUED FROM PAGE 151

crete by Ryan Comment and steel plate by Mike Fouks, while letting in views of the private backyard. A sage-green sofa, black leather Mies van der Rohe "Barcelona" chairs, and crisp linen curtains (with the drapery hardware handcrafted by Brad), set a soothing tone.

The dining room's wood table, simple leather chairs, and recessed lighting (instead of a chandelier) keep the focus on the view out the windows.

Two red Eames molded plywood chairs cozy up to the hearth in the kitchen, where the custom plaster finish by Edin Maslo on the fireplace wall resembles board-formed concrete. Classic "Navy" barstools from Design Within Reach gather around the island, a hand-in-glove design in concrete and stainless steel. White pendants illuminate the space. A secret pantry behind the north wall of the kitchen provides storage and a wine and beverage center.

"Everything in the master bedroom is designed around Brad being able to get up early, work out, and get ready for an early morning flight without waking me," says Mary. A large walk-in closet, bathroom, and workout area close off for soundproofing. When the Schrocks want soothing sound, they open the French doors to hear the fountain.

Upstairs, a balcony of steel and airline cable crafted by Russ Bradley looks down to the kitchen and living areas. The sons' bedrooms, a guest room, and Brad's office offer plenty of room to spread out but still keeps things simple.

"We were diligent in planning for the patterns of how we live, and that paid off in so many ways," says Brad. "We love waking up here in the mornings. We really do feel like we are on vacation." ♦

The *Source* BOOK

CONTRACTOR

Paul Brown Builder

913-642-2855

paulbrownbuilder.com

COMMERCIAL WINDOWS

Loewen Windows/doors available through McCray Lumber

913-780-0060

mccraylumber.com

CUSTOM CABINETS

Royal Fixture Company

816-483-2800

royalfixture.com

CUSTOM PLASTER

Bingham Stucco

816-673-1158

binghamstucco.com

DECORATIVE PLASTER AND FINISHES

Delta Construction LLC

816-686-6507

deltaconstructionllc.com

FLOWERS

Studio Dan Meiners

2500 W. Pennway St.

816-842-7244

danmeiners.com

GLASS

Carter Glass

1608 Locust St.

816-471-8288

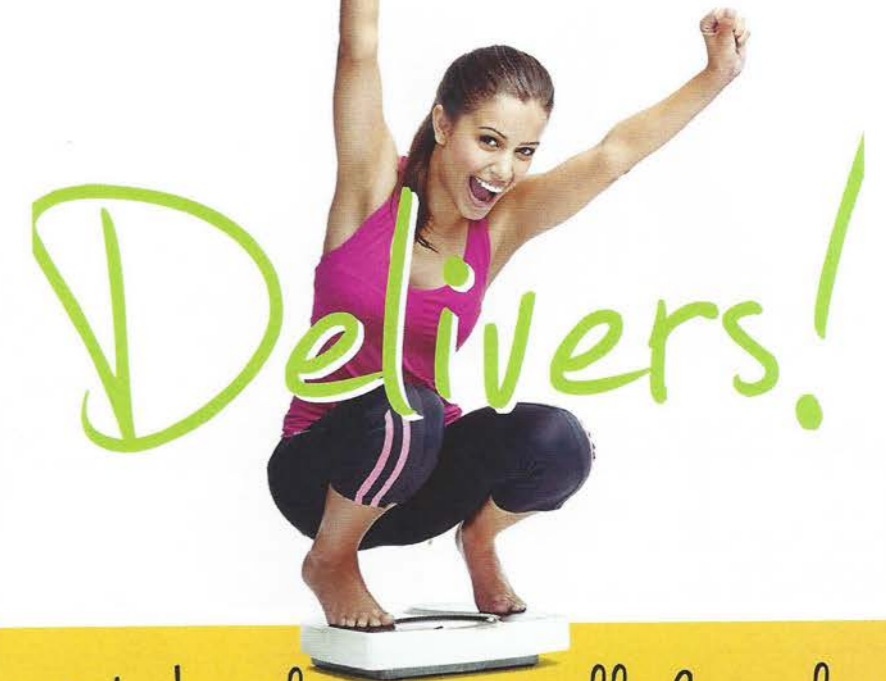
INTERIOR DESIGN

Lisa Schmitz Interior Design

816-806-6225

lisschmitzinteriordesign.com

THIS DIET



With calorie controlled meals
from Success Meals KC!

We design a meal profile to meet your specific dietary needs.

Fresh meals are prepared daily by our expert chefs.

Meals are delivered daily to your door by 6 a.m.

Eat & Enjoy! No cooking. No cleaning. No calorie counting!



success meals kc
CUSTOMIZED MEAL DELIVERY

successmeals.com • 913.894.MEAL (6325)